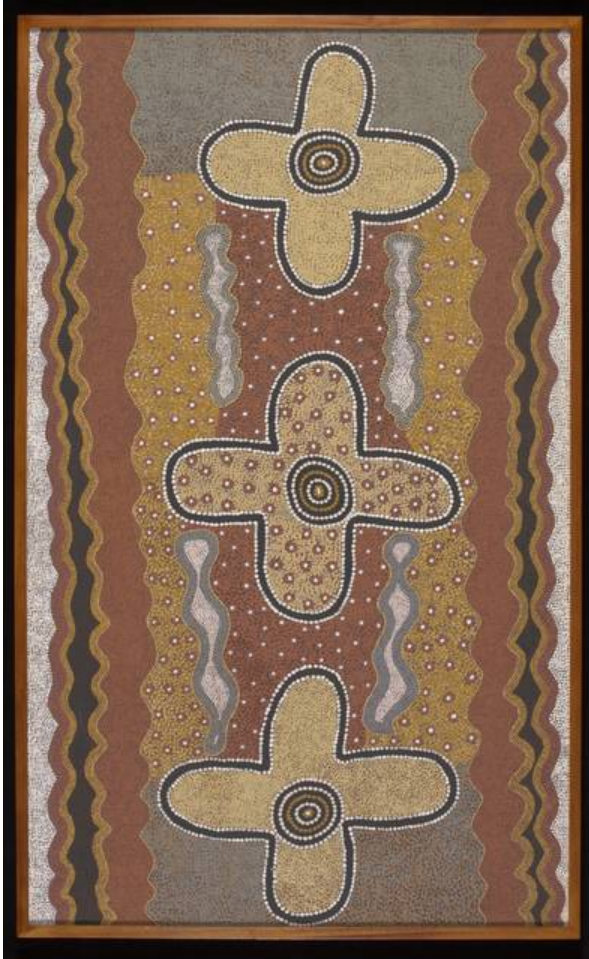


## Manytjimi Berries, a dot painting depicting three cross shapes

IR 4528.0268



## Manytjimi Berries, a dot painting depicting three cross shapes

### Description

'This painting shows the ground and body designs used in ceremonies at a place called Yulpulku, which is west of central Mt. Wedge. This is a womens story associated with 'manytjimi', a small edible berry. The concentric circles are the camps, the 'u' shapes are the women and the small dots are the berries. The bars are the body designs.' (ATSIC record card)

### Physical description

A colour dot painting on canvas featuring three 'cross' shapes against a multicoloured background. Black concentric circles are at the centre of each plus shape. On the reverse handwritten in black ink is 'TT820906' and in pencil across the support beam is 'ATSIC DAA 10031'. The canvas is stretched over a strainer and stapled to the back. The painting has a wooden frame.

### Statement of significance

The Aboriginal and Torres Strait Islander Affairs Art collection comprises 2050 artworks and other objects. The artworks - which numerically dominate the collection - were produced by Aboriginal and Torres Strait Islander communities throughout Australia. The accumulation of these artworks into a single collection has resulted from the choices and selections made during a 38 year period by a variety of staff working for the Council for Aboriginal Affairs (CAA), the Department of Aboriginal Affairs (DAA), the Aboriginal Development Commission (ADC) and the

Aboriginal and Torres Strait Islander Commission (ATSIC) at the national, regional and local levels.

The collection spans the years following the 1967 referendum, when dramatic changes in the governance of Aboriginal people took place, up to 2005 when the Aboriginal and Torres Strait Islander Commission was dissolved. It provides a snapshot of the diversity and changes in Indigenous art and its representation which occurred during the period of its formation. The small number of 'non-art' objects in the collection is also significant in providing insights into the working of the various Commonwealth bodies involved in Indigenous affairs. As well as the significance of many of the individual pieces, the collection is also significant as a whole, as a complex artefact stemming from Australia's history of governance of Australian Indigenous peoples.

## Object information

### What

Type [Acrylic paintings](#)

Collection [Aboriginal and Torres Strait Islander Affairs Art \(ATSIAA\) collection](#)

Dimensions W 940mm x H 1525mm x D 34mm

### When

Date of work  
[1975-1985](#)

### Who

Artist	Owner
<a href="#">Turkey Tolson Tjupurrula</a>	<a href="#">Aboriginal and Torres Strait Islander Commission</a>

### Where

Place collected	Associated place
<a href="#">Canberra, Australian Capital Territory, Australia</a>	<a href="#">Papunya, Central Australia, Northern Territory, Australia</a>
ATSIC branch office	

